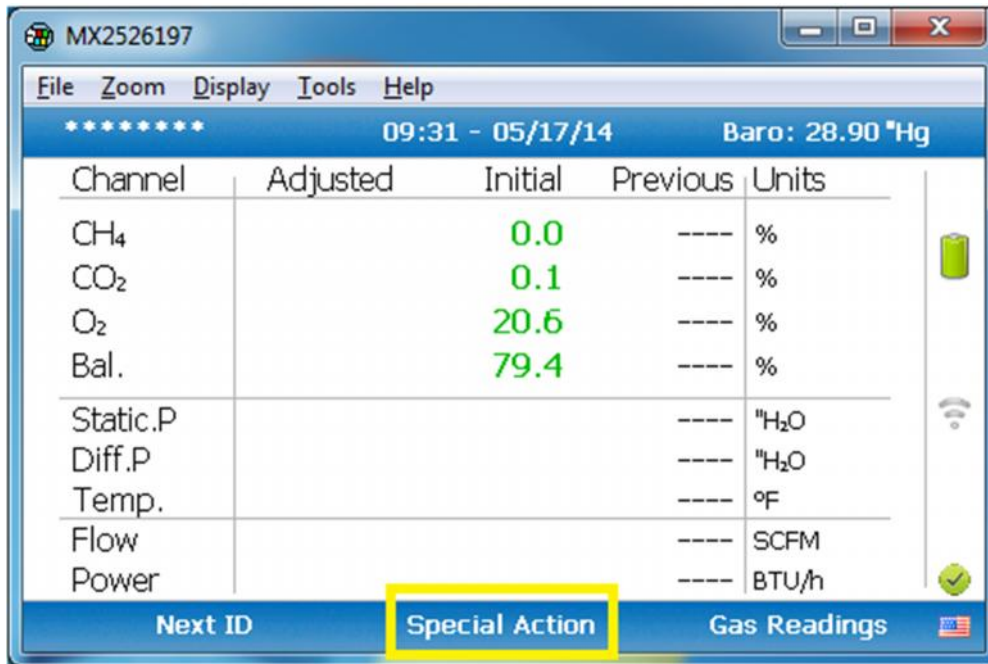


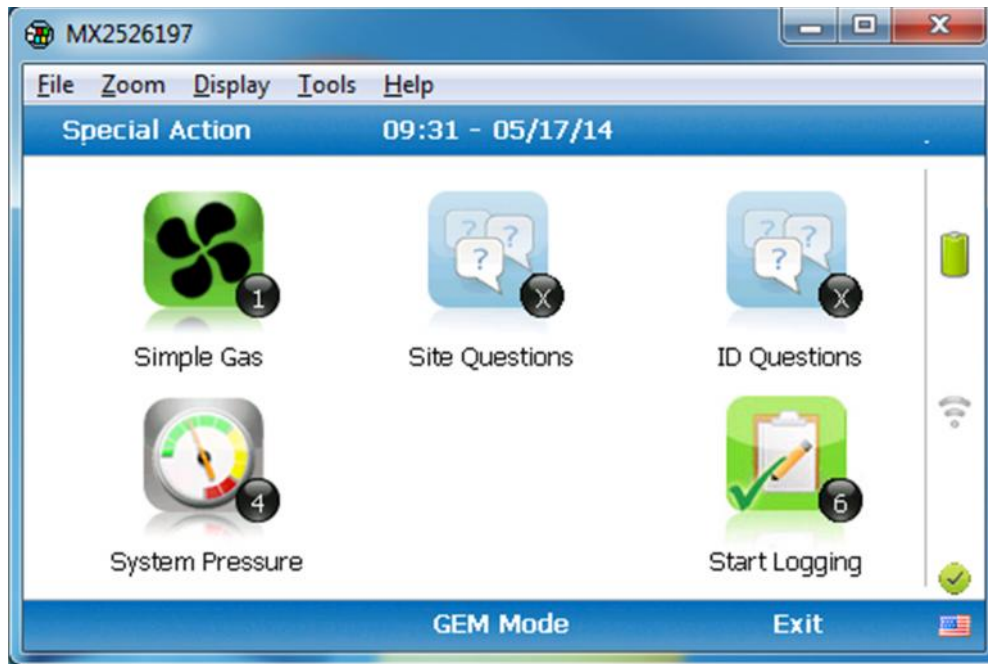


GEM5000 Steps to Discharge Battery Pack

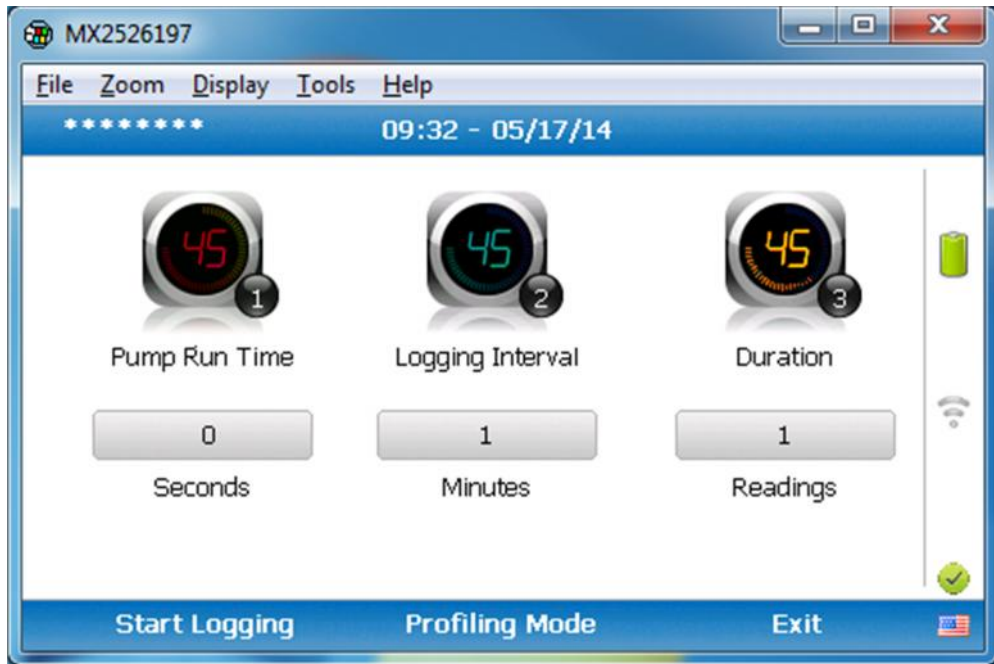
1. From main reading screen select middle soft-key for **Special Action**



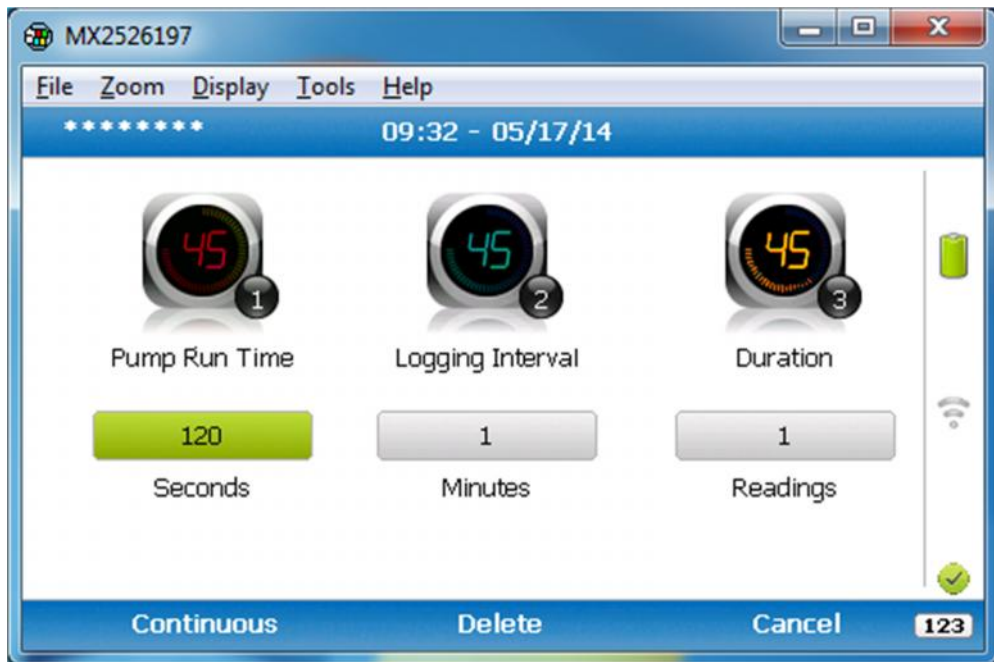
2. From the **Special Action** screen press key 6 for **Start Logging**



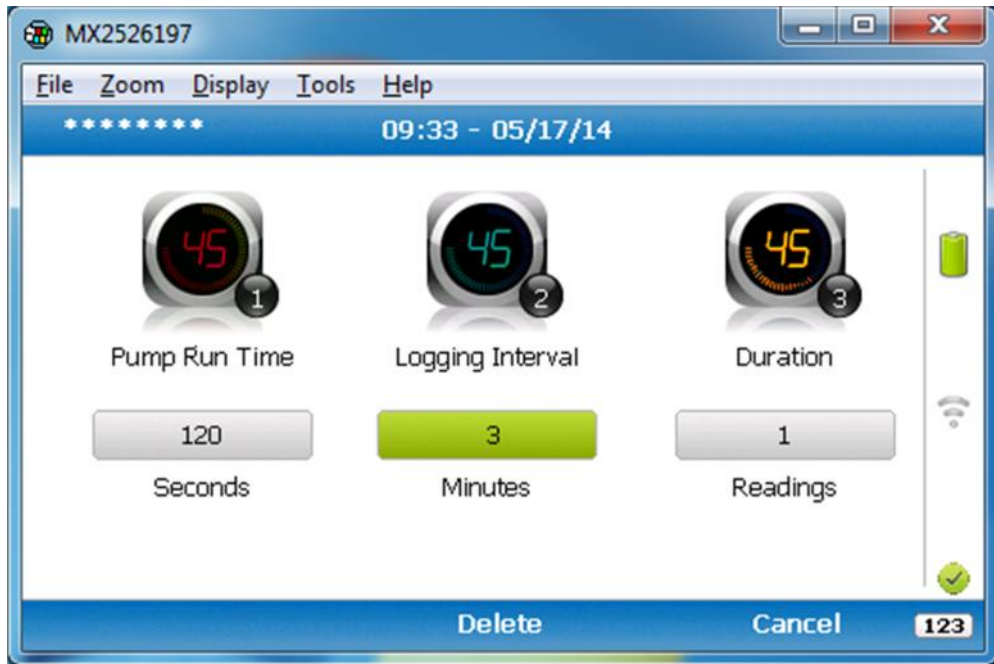
3. Press key 1 to enter **Pump Run Time**



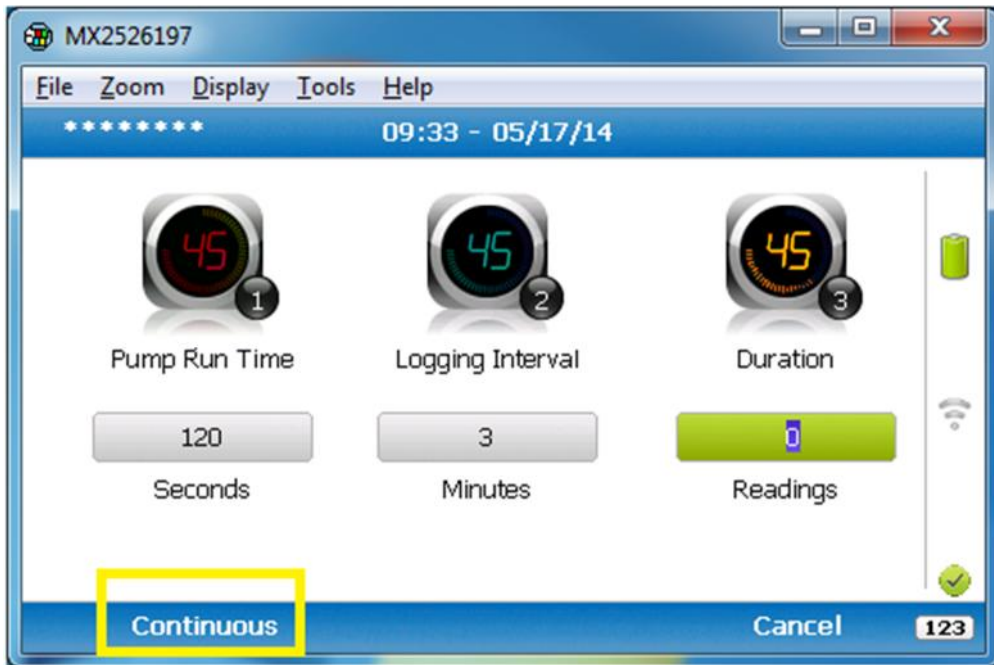
4. Enter 120 seconds end press Enter when complete



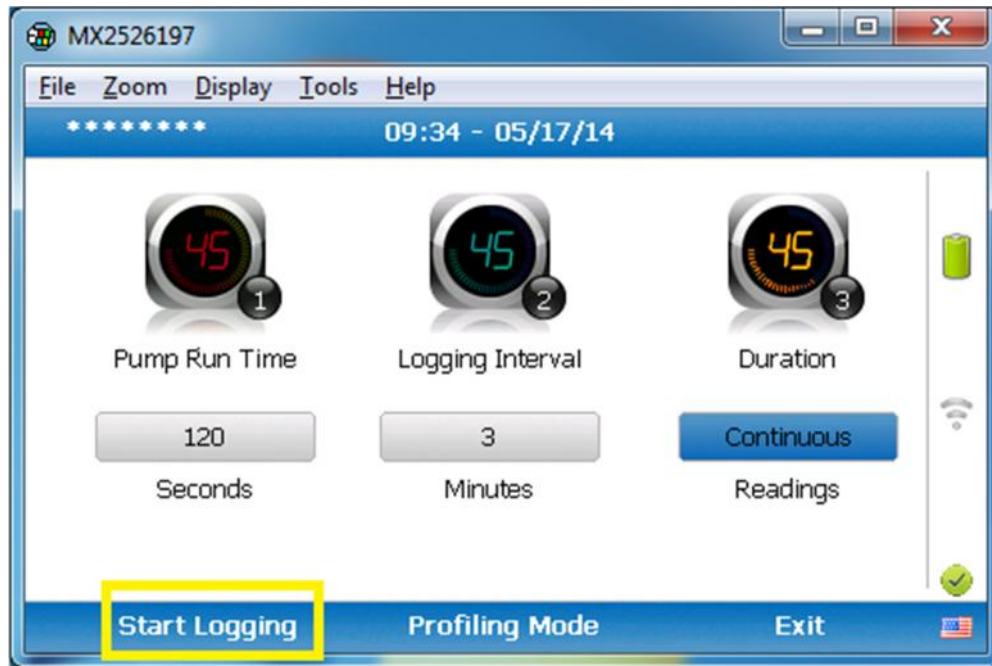
5. Press key 2 to enter **Logging Interval**, then enter 3 minutes and press Enter when complete



6. Press key 3 to enter **Duration** then press the left soft-key to select **Continuous**



7. To start the process press the left soft-key to select **Start Logging**



At this point let the unit run until the battery discharges completely. Battery should take 3-4 hours to fully charge again.

For additional information please contact us.

Service Department
1-800-821-0496 Ext. 6141

LANDTEC North America, Inc.
850 S. Via Lata, Suite 112 • Colton, CA 92324 • 1-800-LANDTEC • Fax: 909-783-3636
www.landtecna.com